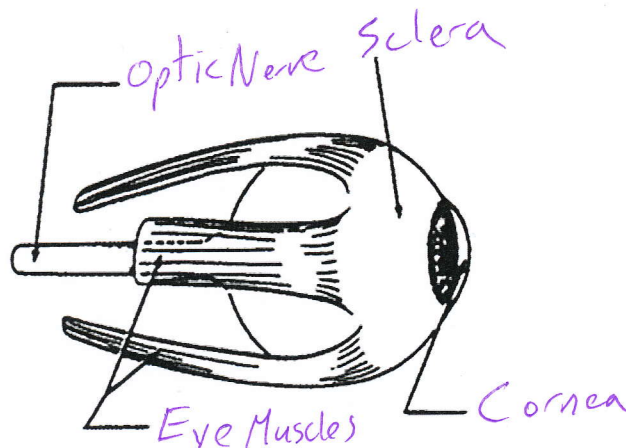


Cow Eye Dissection

Name KEY

EXTERIOR EYE	
Eye muscles	Along the top, bottom, and sides of the eye; thick tough bands of pink tissue.
Fat	Yellow; surrounds back of eye; may cover some muscles
Optic nerve	At very back of eye; pink and as thick as a pencil; may be surrounded by fat and muscle.
Sclera	Tough, whiter outer covering of eye; easily seen at the front of eye
Cornea	Clear covering at front of eye

Label the following diagram using the table above. Draw in the places where you found fat.



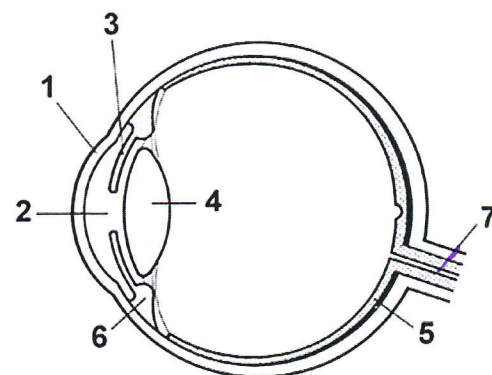
Below is a drawing of the eye with some of the more important parts numbered. Write the names of the parts of the eye and their functions in the proper boxes. The clue list is there to help you.

Part Names

- Lens
- Retina
- Ciliary Muscle
- Optic Nerve
- Pupil
- Cornea
- Iris

Functions

- Contains cells that detect light
- Opening to the inner eye
- Controls the size of the pupil*
- Focuses image of object
- Controls shape of lens
- Transmits information to brain
- Outermost transparent layer of eye, begins focusing process



Number	Part Name	Function
1	Cornea	Outermost transparent layer, begins focussing process
2	Pupil	Opening to the inner eye
3	Iris	Controls the size of the pupil
4	Lens	Focuses the image of the body
5	Retina	Contains cells that detect light
6	Ciliary Muscle	Controls shape of lens
7	Optic Nerve	Transmits information to the brain

Question: How does the eye see? Is the image that is cast on the retina at the back of the eye upright or inverted? Draw a ray diagram to explain your observations.